

# Fletcher Protect™ Party Wall Batts

## Introduction

This installation guide provides installation recommendations for Fletcher Protect™ Party Wall insulation supplied in batt form and installed in NCC class 1 building Party Walls (fire rated separating walls) to compress fill vertical joints, any gaps/junctions between the top of the party wall and the underside of the roof, any gaps between services and the party wall, for adequate fire protection.

## General Information

- Fletcher Protect™ Party Wall Batts are supplied in a standard size to suit most applications.
- Avoid gaps in insulation to ensure fire safe in fire separating constructions.
- Avoid using multiple small offcuts to fill single areas; opt for larger single pieces to be purpose cut to fill larger gaps.
- All insulation shall be installed in accordance with AS3999.
- Refer to latest ICANZ installation handbook Part 2: Professional Installation Guide for further information and tips.
- Ensure that all safety assessments are carried out relevant to the project and all site safety requirements are strictly adhered to.
- Ensure roof space areas are adequately ventilated. Roof spaces can become very hot, particularly in warm weather. Take breaks and drink plenty of water to get relief from the heat.
- Not suitable for bush fire BAL-FZ rating constructions.
- Electric cables and equipment partially or completely covered with bulk thermal insulation may overheat and fail. Refer to AS3999:2015 – Section 2.6 for details.
- Where cutting is required, use a sharp serrated edge knife (drywall knife, bread knife or small hand saw), cutting insulation with power tools is not recommended.
- Fletcher Protect™ Party Wall Batts are not designed to withstand weathering; hence external cladding should be applied without delay. These insulation products are not suitable for applications where they would be subject to wetting or excessive moisture.

## Material required

- Prior to installation calculate the amount of Insulation and fixings required for the installation.
- Measure the sq.m of area to be insulated.
- Coverage of each pack of Fletcher Protect Party Wall Batts is provided on the relevant technical data sheet.
- Simply divide the area or length to be insulated by the coverage per pack to determine the number of packs to order.
- Allow for minimum 20% compression and wastage as general rule allow for 5% wastage for simple areas and greater allowances for more complex areas.

## Accessories

- Generally, Fletcher Protect™ Party Wall Batts will stay in place when installed prior to roof sheeting being installed. Where Party Wall Batts are to be left exposed for extended periods stringing may be used to hold the product in place.
- Simple stringing such as pvc tape can be used. Any stringing selected should minimise the unevenness of contact of the plasterboard against the framing.

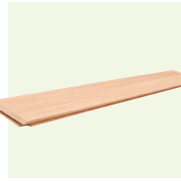
## Tools



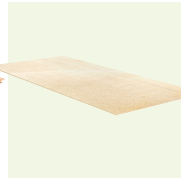
**Tape measure**  
To measure lengths required.



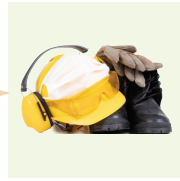
**Sharp knife**  
With a plastic (non-conductive) handle for cutting insulation to size.



**Straight edge**  
For cutting.



**Cutting board**  
Or hard, durable surface.



**Clothing & PPE**  
Appropriate wear for site (refer sections below).



**Ladder**  
Or scaffolding as needed.



**String/twine**  
If insulation is to be left for an extended period.



**Staple gun**  
With non-metallic staples to staple stringing if needed.



**Torch**  
For use in roof spaces.



**Kneeling board**  
To span two joists if needed to install insulation within roof spaces.



**Serrated Knife**  
A serrated knife for cutting stone wool.

## PPE

Personal Protective Equipment (PPE) must be compliant with the requirements of the specific worksite. Check with site foreman or site representative to ensure that required PPE obligations are met. As a recommendation for handling and installing insulation, the following PPE is recommended:



**Site specific PPE**  
Must always be worn. Where installation is above head height safety glasses must be worn.



**Eye protection**  
Suitable eye protection to AS 1336 reduces the risk of eye contact with dust or fibres.



**Gloves**  
Gloves are recommended, especially when cutting insulation.



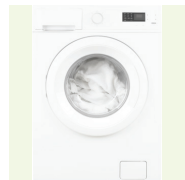
**Work clothes**  
Loose fitting clothes, including long pants, long sleeved shirts, cap and gloves should be worn. Long sleeves recommended.



**Dust mask**  
A dust mask is recommended when working in dusty areas.



**Safety shoes**  
Safety boots/shoes must be worn to protect feet.



**Separate wash**  
Wash your clothes separately and rinse the washing machine after use.

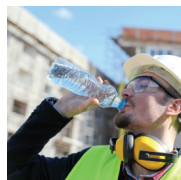
## Safety



**Assess**  
Assess the building structure and site for any safety issues prior to commencing work.



**Check**  
Before entering a ceiling space, make note of the location of equipment in the ceiling such as lighting luminaires, exhaust fans and fire sprinklers.



**Stay hydrated**  
Ceiling spaces can be hot and poorly ventilated; get relief and fresh air regularly and stay hydrated.



**Electrical wires**  
Ensure the work area is safe from hazards including electrical cabling. Working near live electrical wiring is extremely dangerous; use caution to avoid touching any live electrical cables.



**Isolate power**  
If accredited, isolate power at the circuit board where necessary and apply caution tags to circuit breakers.



**Electrician**  
If not accredited, ask appropriate site representative to isolate power at the circuit board where necessary and apply caution tags to circuit breakers.

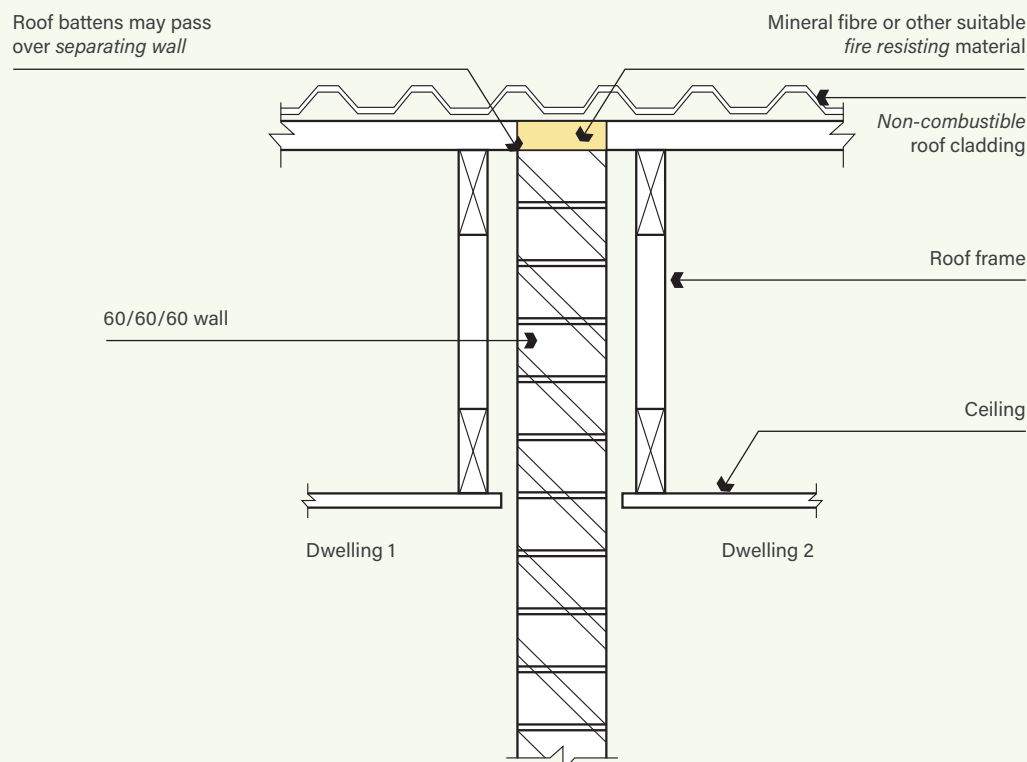


**Height**  
When installing insulation, working at height can be dangerous; exercise caution when climbing ladders or accessing elevated platforms.

### Intertenancy and party walls

- Check the geometry of the roof space between the top of the intertenancy wall and the roofing membrane.
- Measure and cut batts to the required dimensions and shapes.
- Batts are supplied as 168 x 100mm blocks or in 600mm widths with a slit down the centre (which separates into two 300mm pieces), and they can easily pull apart or be cut with a serrated knife.
- A single layer of Protect Party Wall Batt is preferred. Fletcher Insulation does not recommend more than 3 layers to be stacked without adequate support.
- Compression-fit (minimum 20% compressed) the insulation into the space between the top of the fire rated wall and the roofing membrane, ensuring there are no gaps between the insulation and the top of the wall or roofing membrane.
- A secure and tight fit is recommended for any gaps/voids.
- Avoid direct UV or weather exposure during and after applications.
- Ensure that the insulation is securely held in place and will not collapse or fall over.
- Butt the insulation tightly together to ensure there are no gaps left at joints. When a batt is required to be extended in length, a tight fit is recommended to be made to both ends of each batt to provide a secure butt joint.
- Any vertical joints in a stacked batt installation should be staggered.
- Offcuts may be used to fill small spaces to ensure complete coverage.
- Fletcher Protect Stonewool must not be crossed by any timber or other combustible building element with the exception of Roof battens of 75mm x 50mm or less or roof sarking.

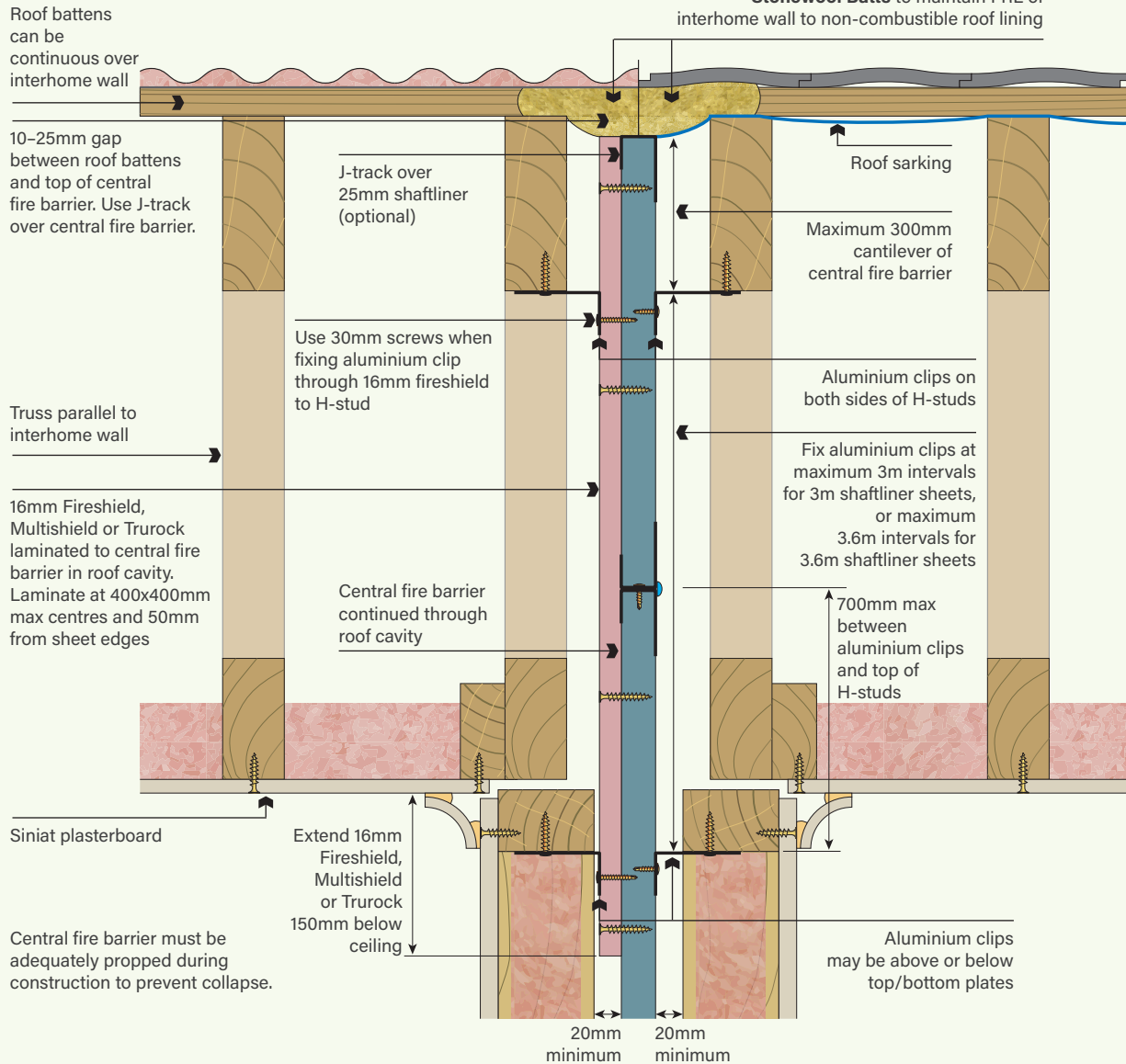
**Note:** If your application/installation is outside these guidelines, please contact Fletcher Insulation prior to commencing the install to obtain written approval for your specific application.



**Figure 1: Interhome wall to roof lining**

Fire Resistance Level (FRL) 60/60/60

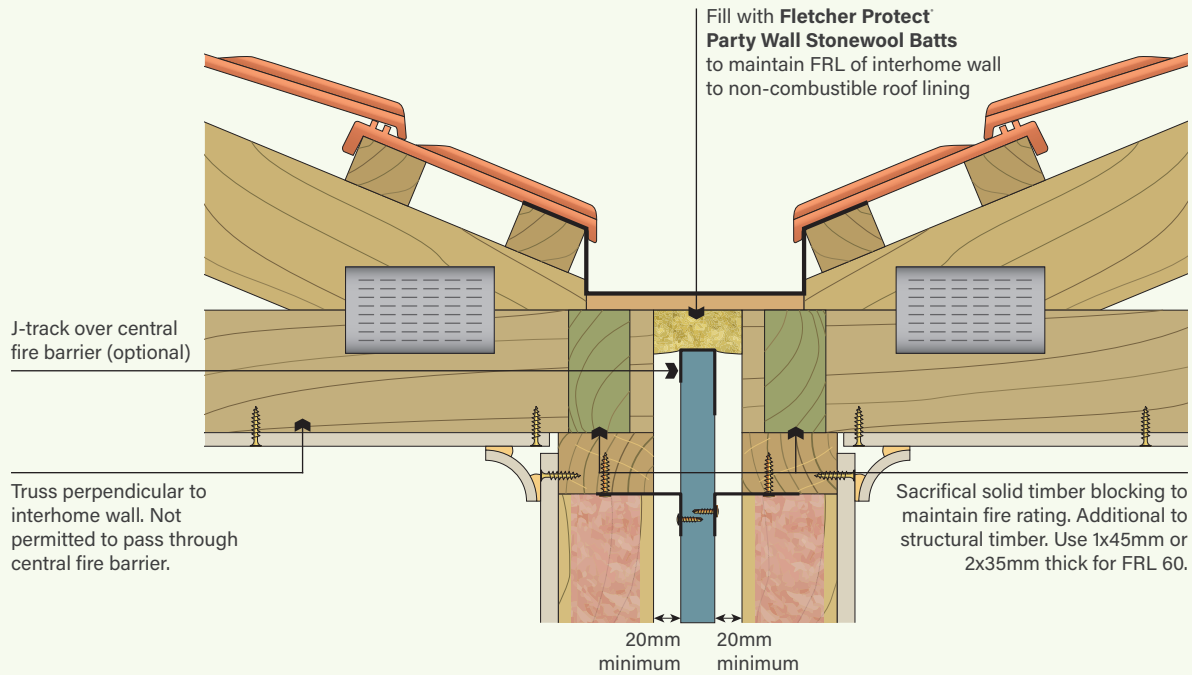
Section view



**Figure 2: Interhome wall to box gutter with perpendicular roof trusses**

Fire Resistance Level (FRL) 60/60/60

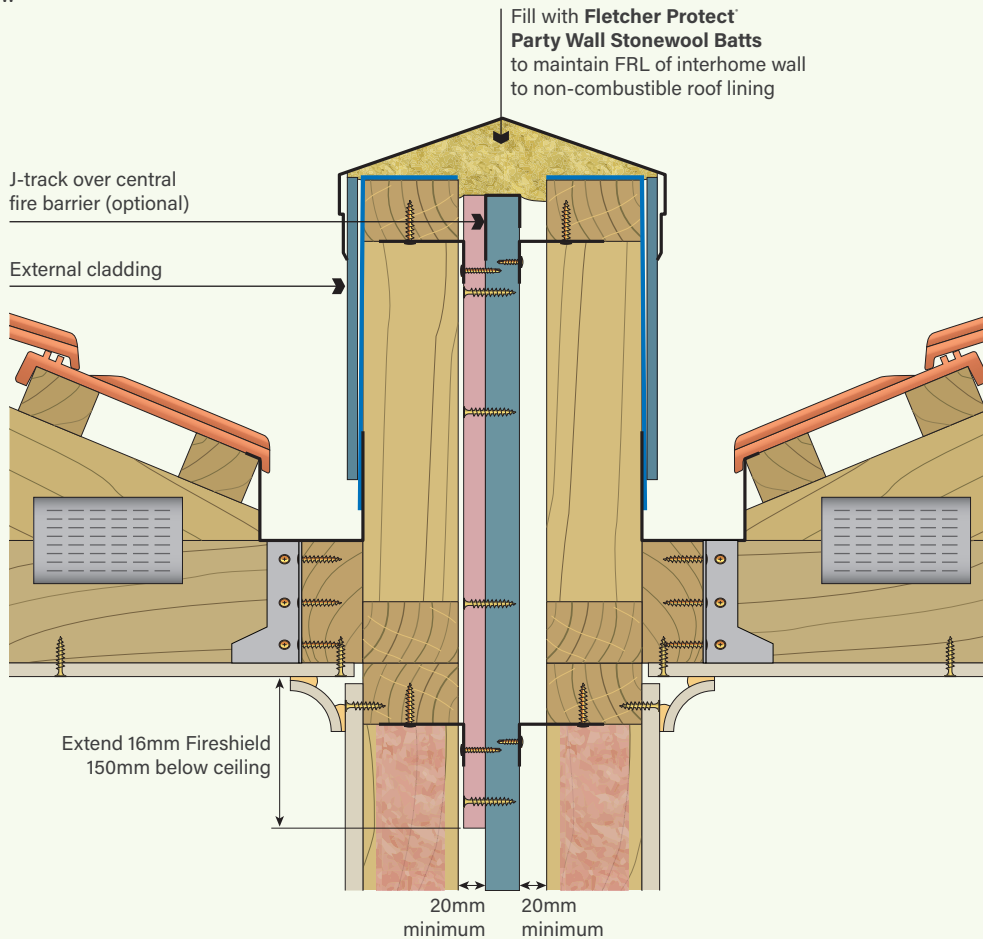
Section view



**Figure 3: Interhome wall to parapet with perpendicular roof trusses**

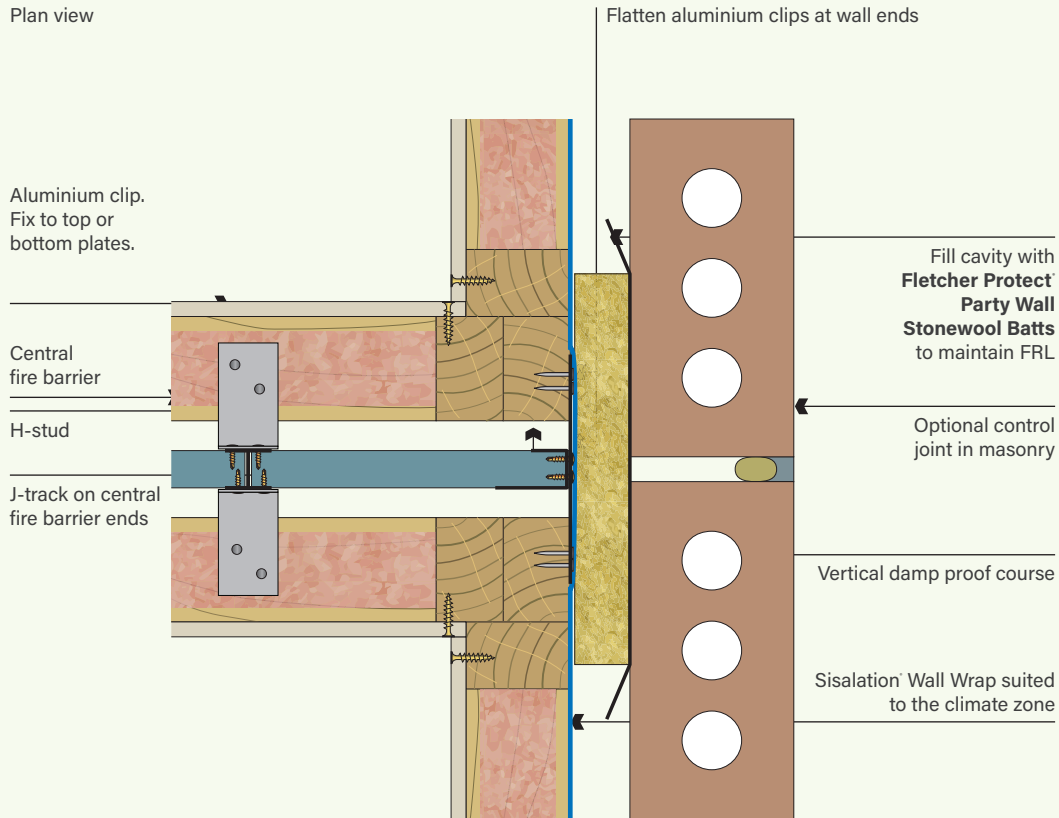
Fire Resistance Level (FRL) 60/60/60

Section view



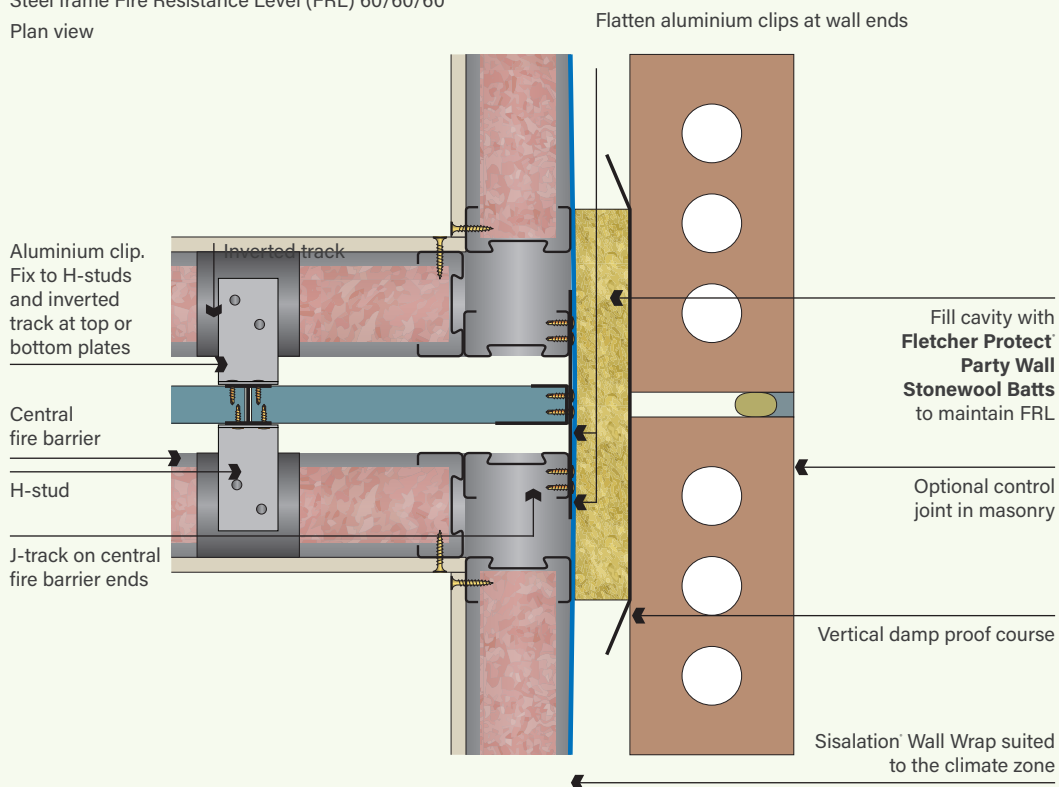
**Figure 4: Interhome wall to external brick wall**

Timber frame Fire Resistance Level (FRL) 60/60/60  
Plan view



**Figure 5: Interhome wall to external brick wall**

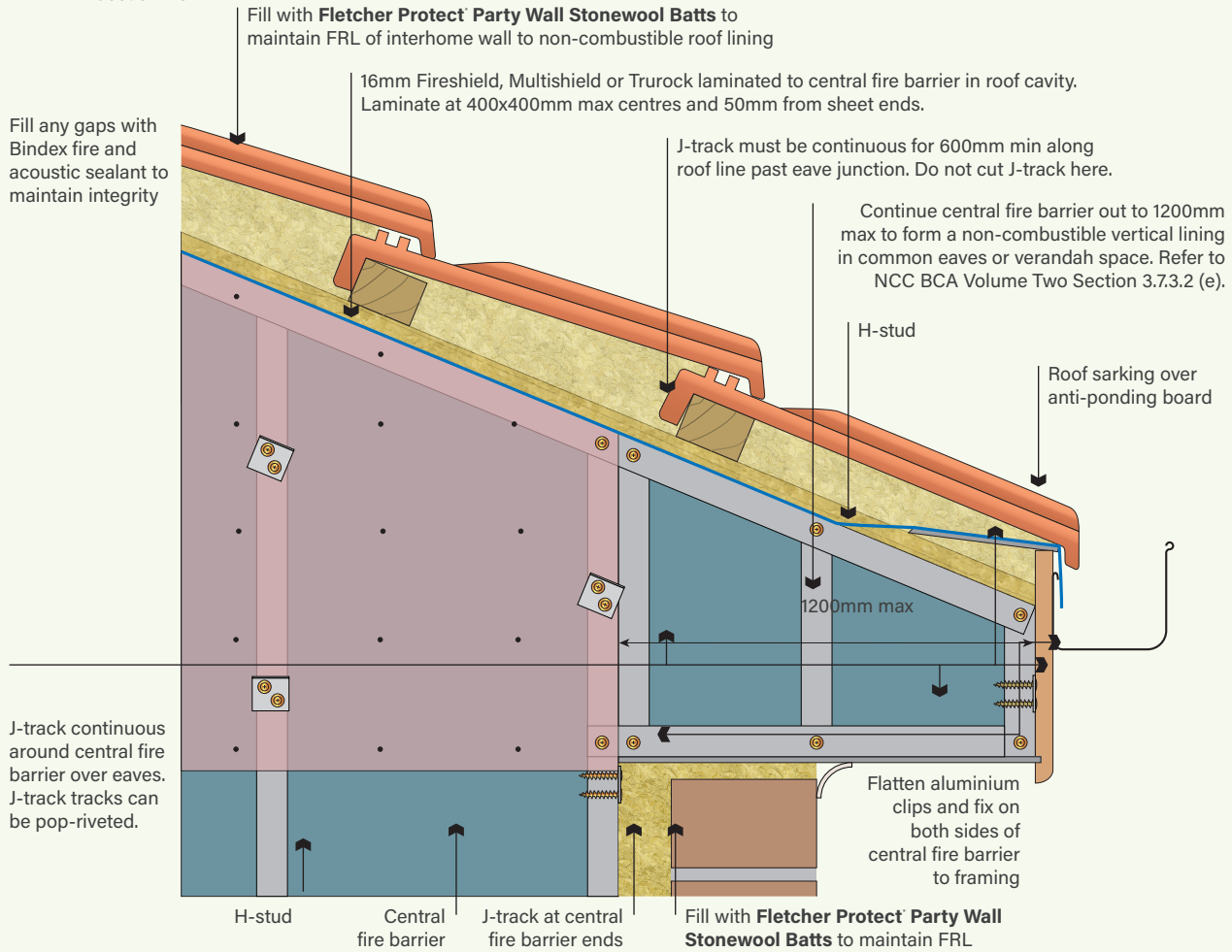
Steel frame Fire Resistance Level (FRL) 60/60/60  
Plan view



**Figure 6: Interhome wall over eaves**

Fire Resistance Level (FRL) 60/60/60

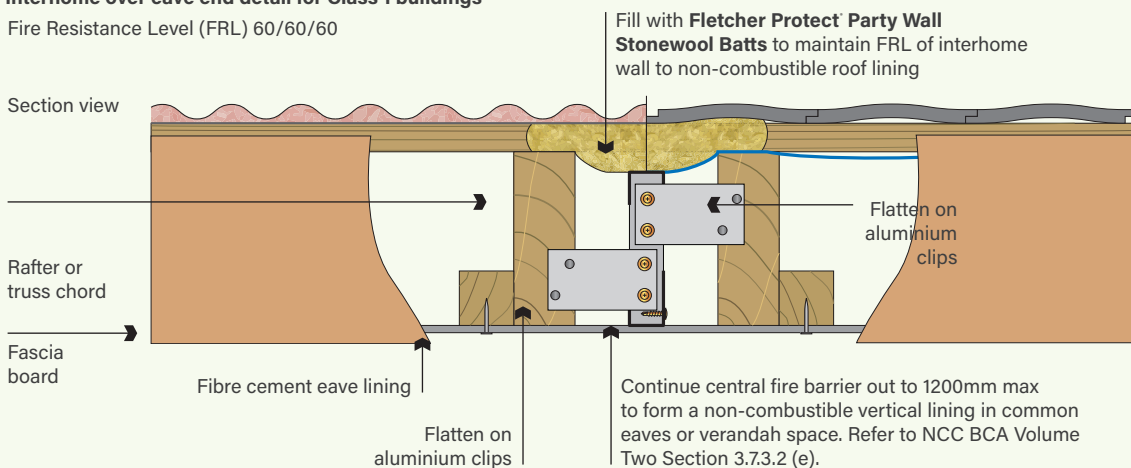
Section view



**Figure 7: Interhome over eave end detail for Class 1 buildings**

Fire Resistance Level (FRL) 60/60/60

Section view



**Note:** If your application/installation is outside these guidelines, please contact Fletcher Insulation prior to commencing the install to obtain written approval for your specific application.

© Fletcher Insulation Pty Limited 2024. Fletcher Insulation reserves the right to change product specifications without prior notification. Information in this publication and otherwise supplied to users as to the subject product is based on our general experience and is given in good faith, but because of the many particular factors which are outside our knowledge and control and affect the use of products, no warranty is given or is to be implied with respect to either such information or the product itself, in particular the suitability of the product for any particular purpose. The purchaser should independently determine the suitability of the product for the intended application. The colour PINK, Pink® and Pink® Batts are registered trademarks of Owens Corning used under licence by Fletcher Insulation. FBS-1 Glasswool Bio-Soluble Insulation® is a registered trademark of ICANZ. Unless otherwise stated all ™ and ® are trademarks and registered trademarks of Fletcher Insulation Pty Limited ABN 72 001 175 355. RTDS10\_Revision\_2\_Issue Date 30102024.